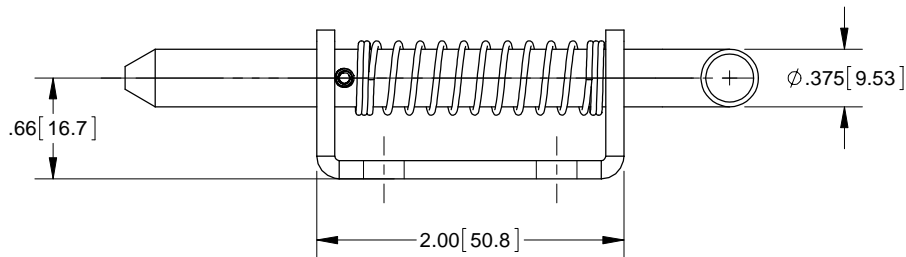
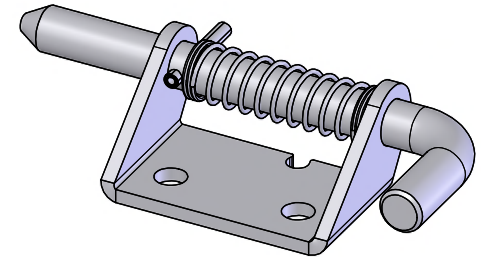


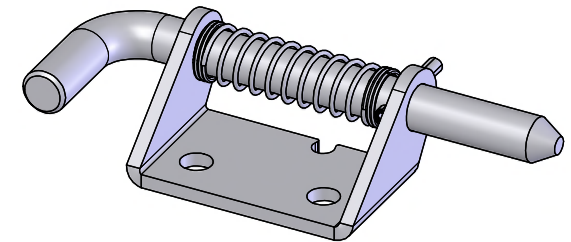
**TOP VIEW**



**FRONT VIEW**



**LEFT HAND**



**RIGHT HAND**

**NOTE:**

DIMENSIONS IN BRACKETS ARE IN METRIC.

<b>1185SS-RH01</b>	RIGHT HAND
<b>1185SS-LH01</b>	LEFT HAND
<b>PART NO.</b>	<b>INSTALLATION</b>

<p><b>SIERRA PACIFIC</b> ENGINEERING AND PRODUCTS © SPEP.COM</p>		UNSPECIFIED TOLERANCES		MATERIAL: 304SS	PART NUMBER: SEE TABLE	
		ANGLES: ±3°		FINISH: TUMBLED	DESCRIPTION:	
<p><b>CONFIDENTIAL PROPRIETARY INFORMATION</b> PLOT DATE: 8/24/2015</p> <p>This document contains information that is the confidential and proprietary property of SPEP and may not be copied, published, or disclosed to others, or used for any purpose other than review, without the express written authorization of an authorized officer of SPEP. This document must be kept only in SPEP's confidential files when not in use.</p>	INCHES	MM	UNITS: INCHES		<p>SPRING LOADED BOLT LATCHES</p>	
	.XX ±.030	.X ±.76	SCALE: 1:1.25			
	.XXX ±.015	.XX ±.38	WEIGHT: 0.271	SIZE: A		SHEET 1 OF 1
	.XXXX ±.005	.XXX ±.13	DWG. NO. 19749-1185SS-LH01			